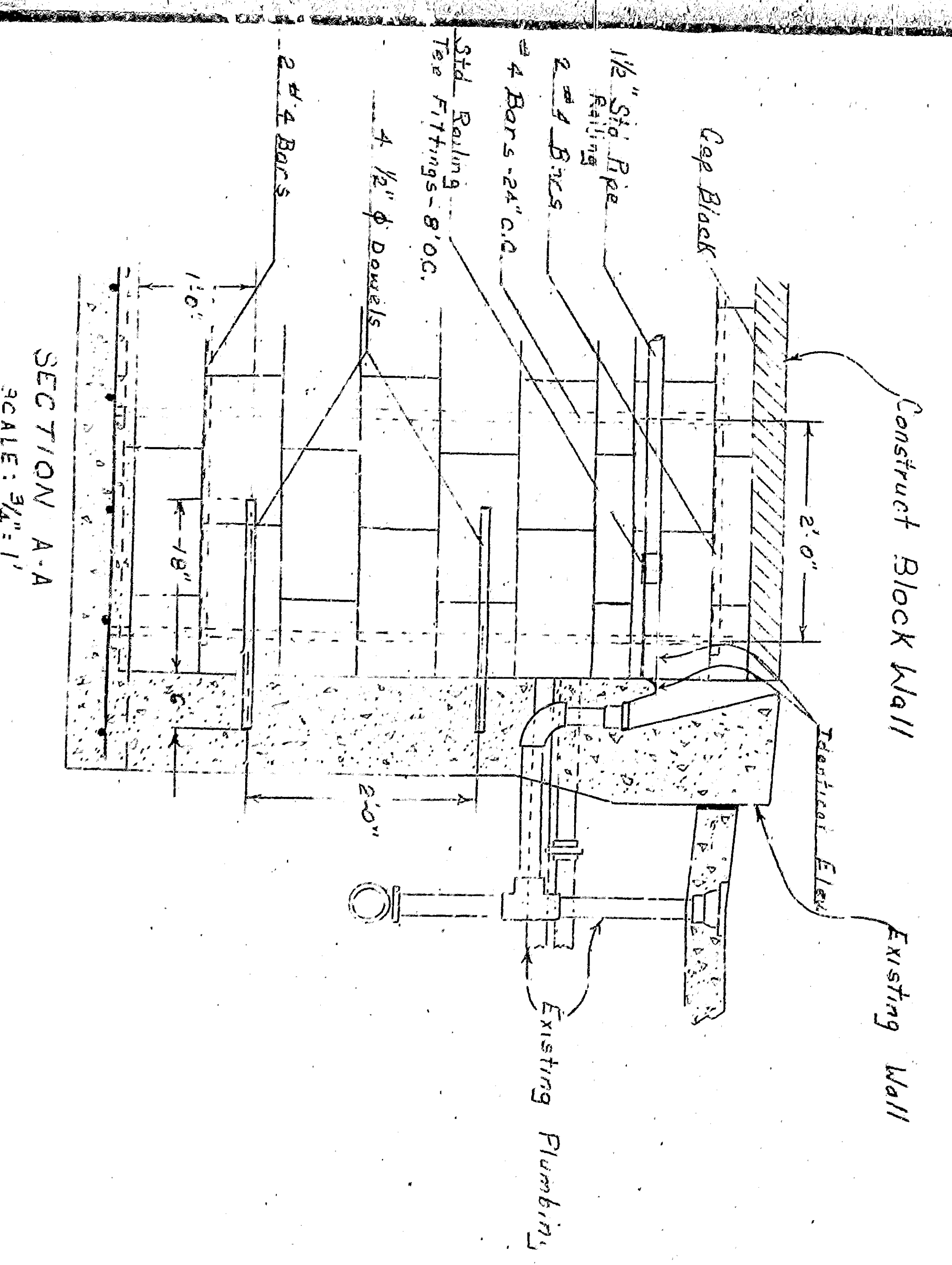
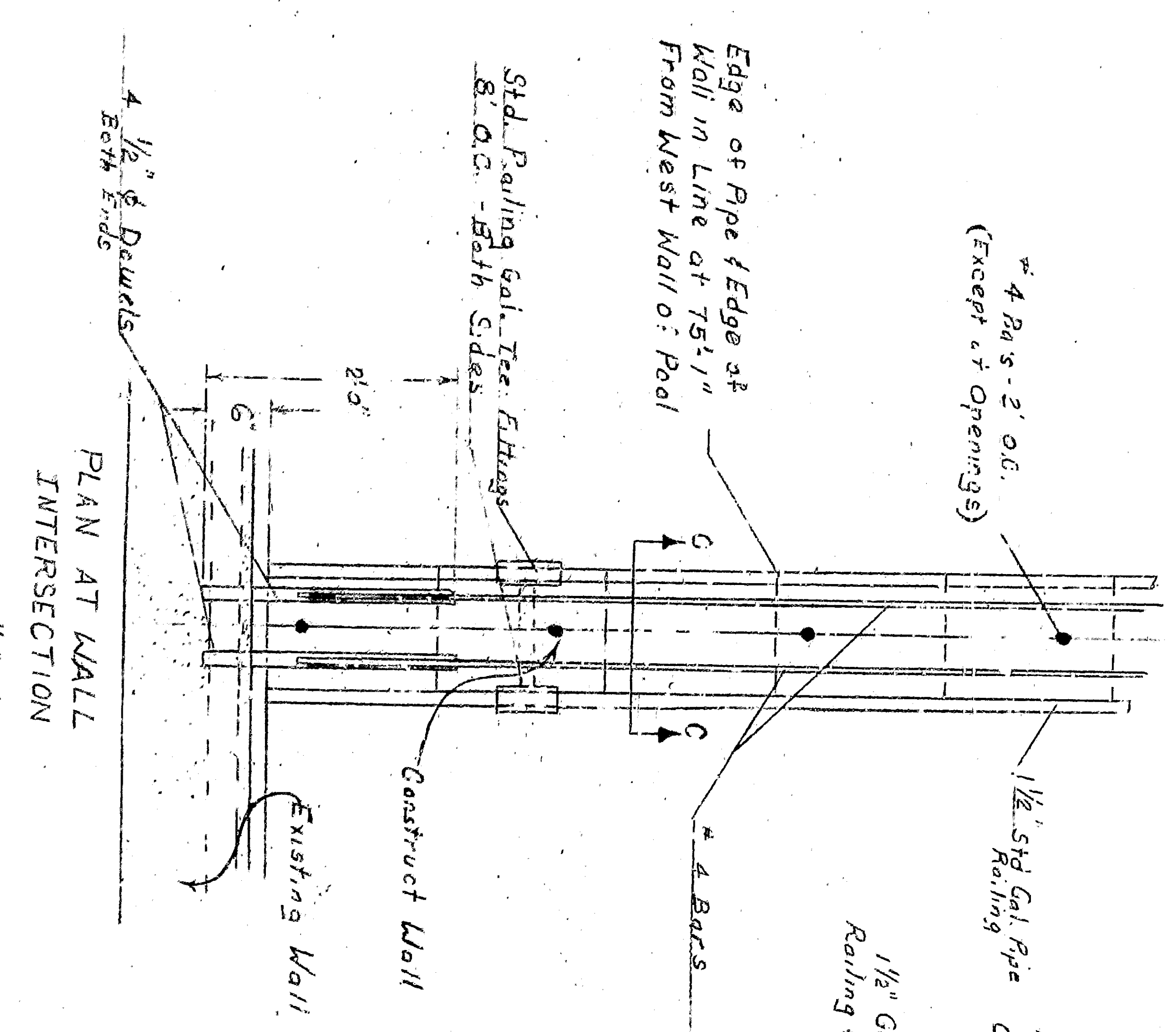


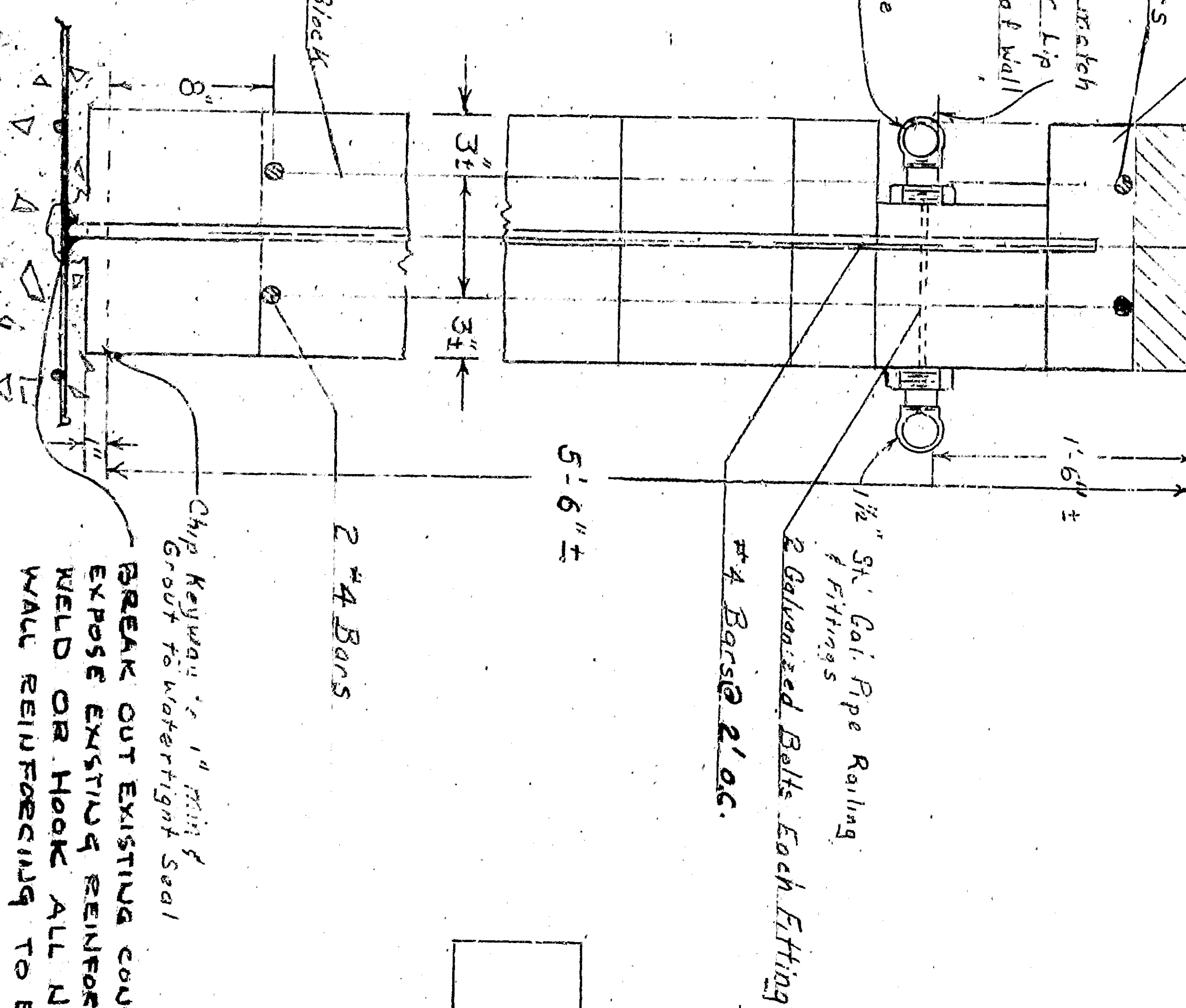
PLAN OF PLUNGE
SCALE: 1/8" = 1'



SECTION A-A
SCALE: 3/4" = 1'



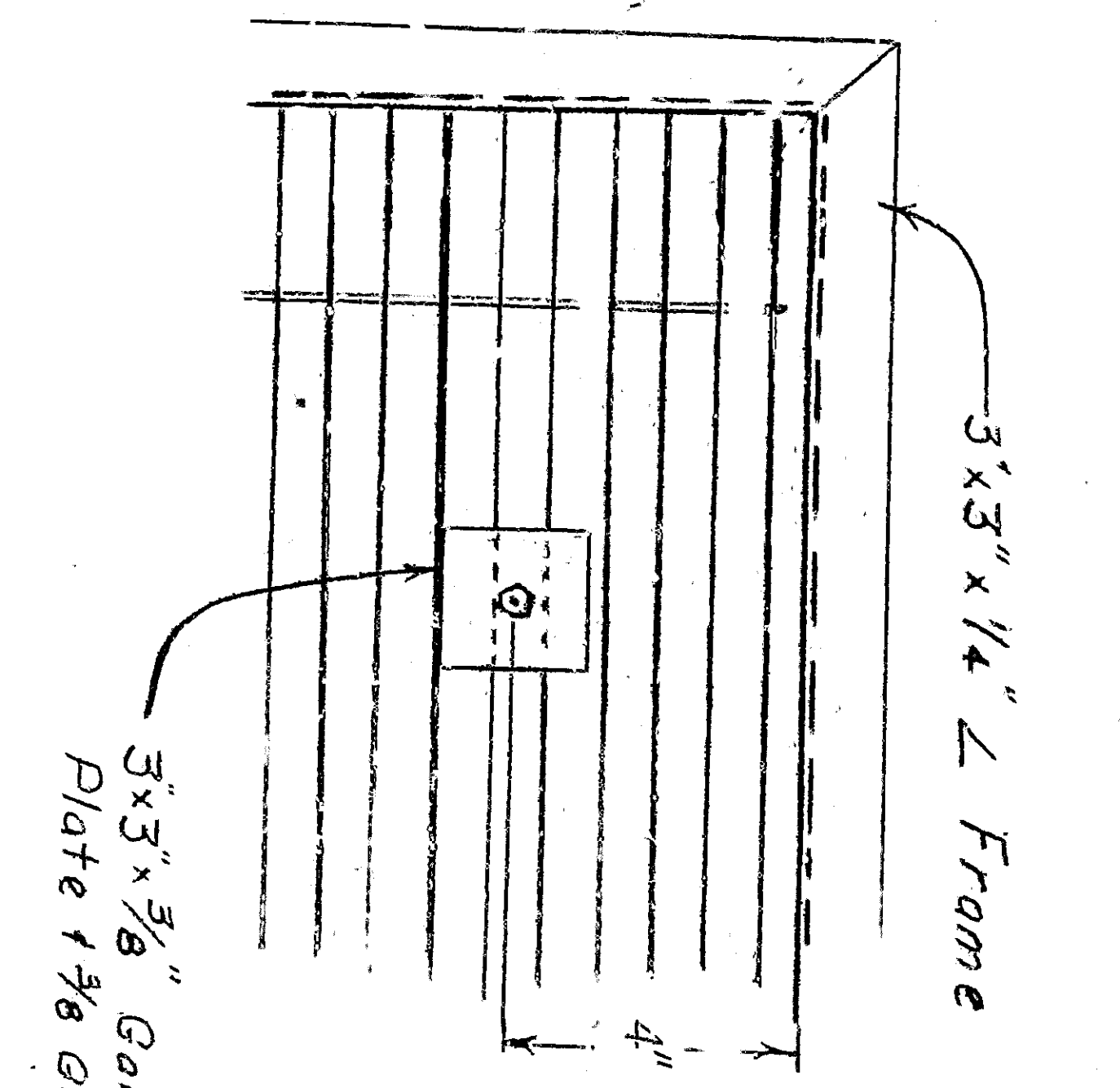
PLAN AT WALL INTERSECTION
SCALE: 1/2" = 1'



SECTION C-C
SCALE: 1/2" = 1'

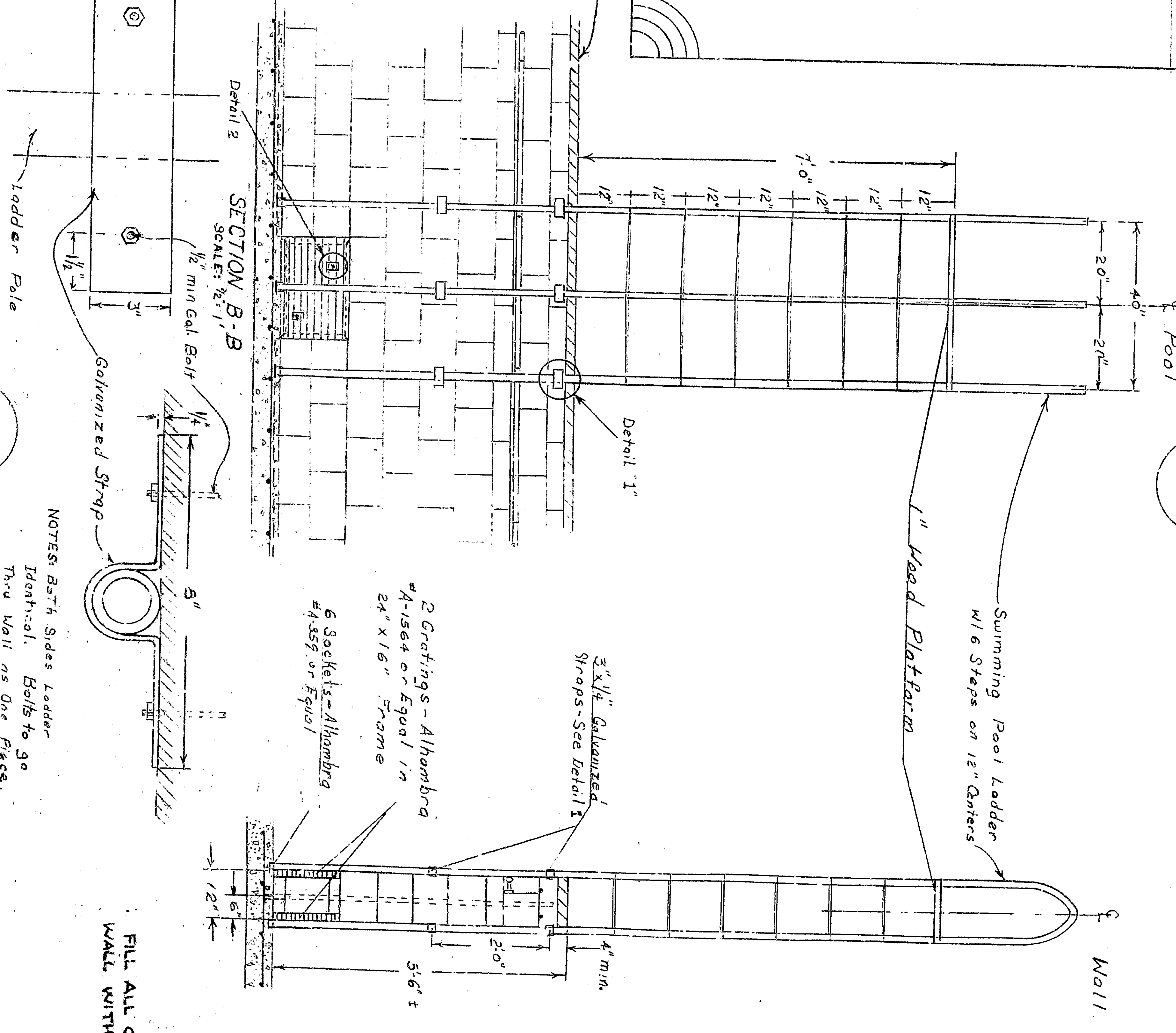
BREAK OUT EXISTING CONCRETE FLOOR TO EXPOSE EXISTING REINFORCING AND WELD OR HOOK ALL NEW VERTICAL WALL REINFORCING TO EXISTING REINFORCING.

ELEVATION OF GRATING
SCALE: 1" = 1'



NOTES:
Two keepers each grating One in grid I & one in grid II
All metal to be galvanized.
Gratings as per Alabama A-108, Frame of Grating to be Integral Unit 24\"/>

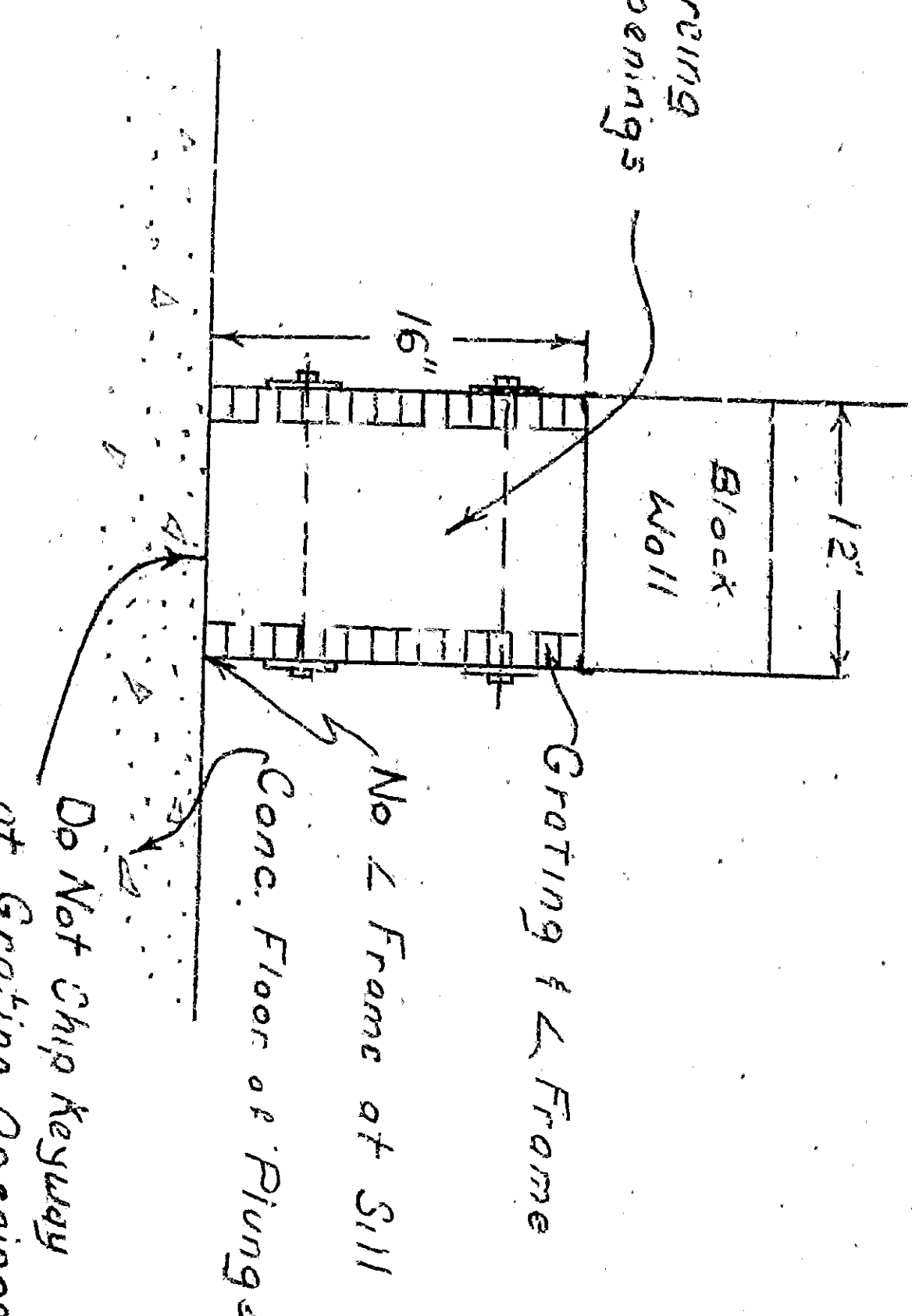
Detail 1



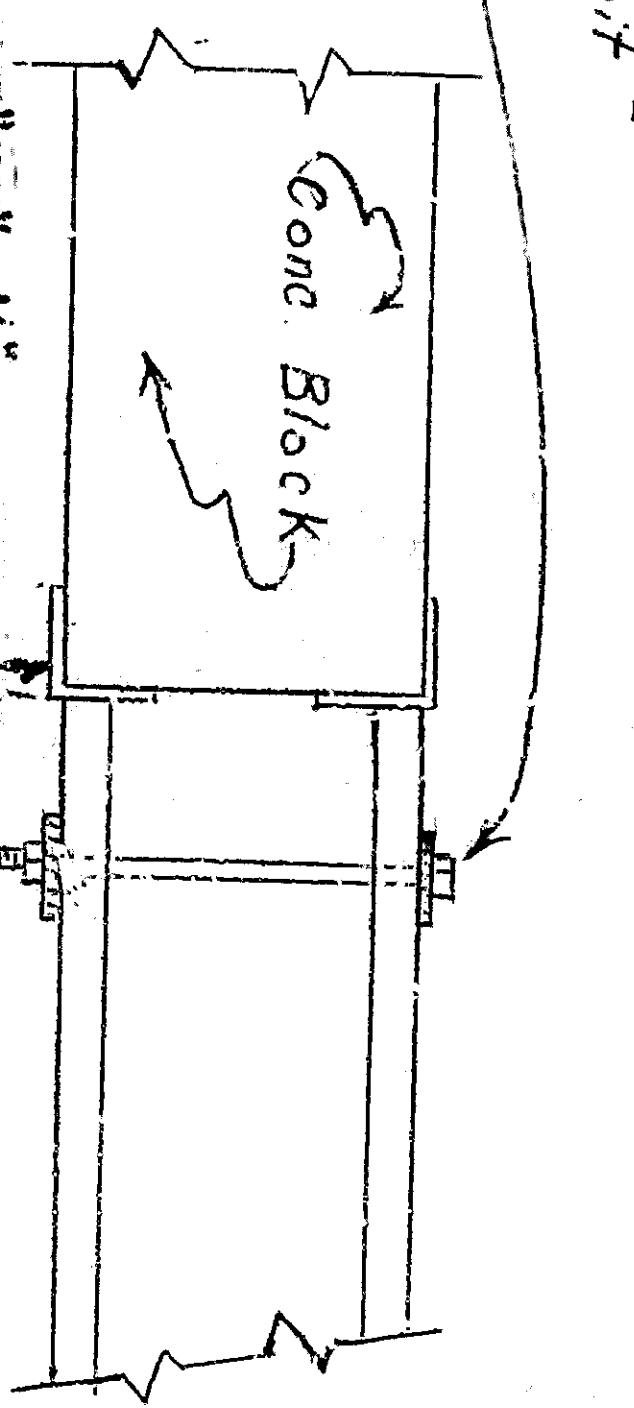
SECTION B-B
SCALE: 1/2" = 1'

NOTE:
Fill ALL CELLS OF CONCRETE BLOCK WALL WITH CONCRETE/MORTAR.

TYPICAL SILL - GRATING OPENING
SCALE: 1" = 1'



TYPICAL HEAD & JAMB OF GRATING OPENING
SCALE: 1" = 1'



APPROVED	DATE	1973
CITY ENGINEER		
REGISTERED CIVIL ENGINEER NO. 13,653		
DRAWING NO. 3246	DRAWN BY	CEH
SHEET 1 OF 1	CHECKED BY	CEH
RECOMMENDED BY		

DEPARTMENT OF ENGINEERING
CITY OF SAN BERNARDINO
FERRIS HILL PARK MUNICIPAL
PLUNGE - DIVIDING WALL
EAST HIGHLAND AVENUE